

The Arxview Data Center Analytics Engine (DCAE) /

Storage Reporting and Analytics Solution /

Key Features /

Low Cost /

More affordable than any competing product

Quick Deployment /

Arxview is up and running in as little as an hour, with no disruption to the storage network and without the installation of any agents or in-band devices

Unified Views of the Entire Enterprise /

Arxview reports on the entire storage network regardless of equipment type, vendor, or volume of data. SAN, NAS, DAS and switching are all included in a single intuitive console

Full Performance Monitoring /

Arxview shows live and historical performance data for a wide range of storage hardware and switching.

VMware® Mapping /

Arxview maps VMware® relationships from guest servers all the way back to the storage arrays, displaying every item in that path

File-Level Detail /

Multiple file level grouping and sorts are available on key data points such as file type, age, size, last accessed and last updated.

Simplify Monitoring of Your Storage Environment /

The Challenge: Monitor and Respond to Storage Performance and Utilization

The challenges of managing the data center and its infrastructure are vast and unrelenting. There are constant demands to improve performance, track capacity utilization and balance the needs of the business while constantly increasing efficiencies.

The Solution: Arxview - End-To-End Storage Monitoring and Reporting

Visualize /

Arxview brings cutting edge visibility to your storage infrastructure. Now users have unprecedented visibility into a full array of performance monitoring, capacity metrics and resource utilization visualizations, saving operators valuable time and resources and guaranteeing a balanced and fully optimized storage environment. Arxview's lightweight, web-based user interface brings a rich feature set to the forefront that can easily be viewed and shared throughout the organization. Detail on a broad group of performance factors, coupled with this flexible interface delivers a uniquely valuable perspective, Stop imagining what would be possible with total visibility into the environment and experience it for yourself.

Understand /

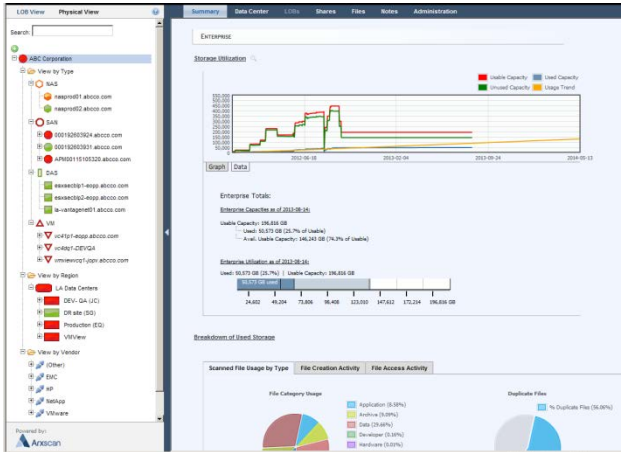
Arxview presents views of your environment in many different ways including nested trees, charts, treemaps, tables and dynamic topology views. These views serve as windows into your organization, showing the nested storage hierarch as well as the logical or business units that depend on those assets. The mapped objects include disks, LUNS, qtrees, volumes, aggregates, filers, arrays, blade chassis, virtual machines, virtual data centers, regions, physical data center and much more. Arxview adds logical units (business groups, applications, projects, teams, etc) allowing you to see at a glance how your company's IT dependencies traverse the entire storage network.

Respond /

Arxview monitors live performance and event data from a variety of storage products and collects them all under one visual matrix. Alerts, both system generated and user created, propagate up through Arxview's logical and physical hierarchies, providing you with an immediate notification of not only the source of the problem, but also the scope.

The Arxview Data Center Analytics Engine (DCAE) /

Dynamic Reporting /



It's Amazing What You Can Do When You Can See What You're Doing /

The Arxview DCAE's intuitive presentation layers show the entire storage environment in hierarchal relationships that let the user drill from the top of the enterprise all the way down to the disk and file level with the added benefit of color coded alerting that brings potential issues to the forefront.

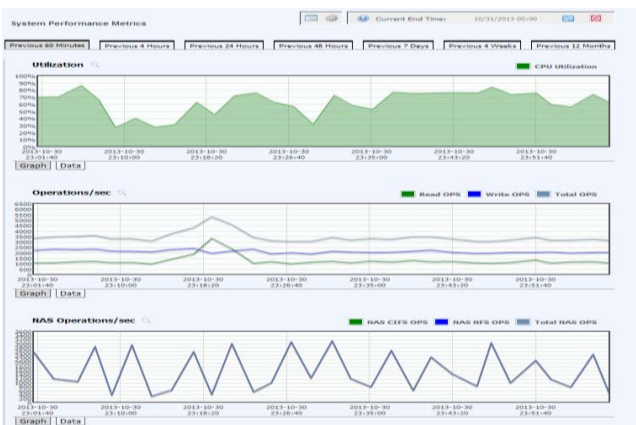
Detailed Metrics /

| | Starting % | Ending % | Starting GB | Ending GB | End User Usage |
|--|------------|----------|-------------|-----------|----------------|
| | 71.02% | 70.17% | 32.67 | 32.28 | |
| | 34.67% | 34.96% | 31.19 | 31.45 | |
| | 13.88% | 13.85% | 13.88 | 13.85 | |
| | 65.85% | 65.02% | 30.01 | 29.63 | |
| | 30.86% | 30.69% | 27.80 | 27.65 | |
| | 86.18% | 86.23% | 902.10 | 902.62 | |
| | 71.25% | 77.07% | 32.77 | 35.45 | |
| | 36.78% | 38.27% | 33.09 | 34.44 | |
| | 79.95% | 83.86% | 36.78 | 38.58 | |
| | 54.43% | 54.77% | 48.97 | 49.28 | |
| | 73.20% | 79.30% | 33.67 | 36.48 | |
| | 79.47% | 69.71% | 14.46 | 14.68 | |

All of the Detail You Need at Every Level /

Whether it's total array capacity, LUN level detail, file counts and aging, database inventories across all storage or one of the hundreds of other metrics that the Arxview DCAE delivers, the data that you need to analyze the environment are at your fingertips and in context with the specific equipment or users impacted.

Comprehensive Performance /



Keeping Your Finger on the Pulse of the Data Center /

Arxview reports minute-by-minute performance metrics in trended time lines selected by the user for both storage arrays and switching. Graphic views are supplemented with data tables highlighting spikes and anomalies.